

## 測試報告

號碼(No.) : CE/2014/C6382

日期(Date) : 2015/01/07

頁數(Page): 1 of 6

## Test Report

南亞塑膠工業股份有限公司

NAN YA PLASTICS CORPORATION

嘉義縣新港鄉中洋村中洋工業區2號 硬布一廠

NO. 2, CHUNGYANG INDUSTRIAL PARK, HSINKANG VILLAGE, CHIAYI COUNTY, TAIWAN



以下測試樣品係由申請廠商所提供及確認 (The following sample(s) was/were submitted and identified by/on behalf of the applicant as):

送樣廠商(Sample Submitted By) : 南亞塑膠工業股份有限公司 (NAN YA PLASTICS CORPORATION)

樣品名稱(Sample Description) : PP SYNTHETIC PAPER (PP合成紙)

同材質產品(Sample description of the same material) : PP 膠布/膜片 (PP SHEET/FILM)

收件日期(Sample Receiving Date) : 2014/12/30

測試期間(Testing Period) : 2014/12/30 TO 2015/01/07

=====  
測試需求(Test Requested) : 依據客户要求, 参考RoHS 2011/65/EU Annex II 指令進行鎘, 鉛, 汞, 六價鉻, 多溴聯苯, 多溴聯苯醚測試. (As specified by client, with reference to RoHS Directive 2011/65/EU Annex II to determine Cadmium, Lead, Mercury, Cr(VI), PBBs, PBDEs contents in the submitted sample.)

測試方法(Test Method) : 請見下一頁 (Please refer to next pages).

測試結果(Test Results) : 請見下一頁 (Please refer to next pages).

結論(Conclusion) : 根據客戶所提供的樣品, 其鎘, 鉛, 汞, 六價鉻, 多溴聯苯, 多溴聯苯醚的測試結果符合 RoHS指令2002/95/EC的更新指令2011/65/EU之要求 (Based on the performed tests on submitted samples, the test result(s) of Cadmium, Lead, Mercury, Cr(VI), PBBs, PBDEs comply with the limits as set by RoHS Directive 2011/65/EU Annex II; recasting 2002/95/EC.)

  
Troy Chang, Manager - Tech  
Signed for and on behalf of  
SGS TAIWAN LTD.  
Chemical Laboratory - Taipei

# 測試報告

號碼(No.) : CE/2014/C6382

日期(Date) : 2015/01/07

頁數(Page): 2 of 6

# Test Report

南亞塑膠工業股份有限公司

NAN YA PLASTICS CORPORATION

嘉義縣新港鄉中洋村中洋工業區2號 硬布一廠

NO. 2, CHUNGYANG INDUSTRIAL PARK, HSINKANG VILLAGE, CHIAYI COUNTY, TAIWAN



## 測試結果(Test Results)

測試部位(PART NAME)No.1 : 白色片狀 (WHITE SHEET)

測試項目 (Test Items)	單位 (Unit)	測試方法 (Method)	方法偵測 極限值 (MDL)	結果 (Result)	法規 限值 (Limit)
				No.1	
鎘 / Cadmium (Cd)	mg/kg	參考 IEC 62321-5: 2013 方法, 以感應耦合電漿原子發射光譜儀檢測. / With reference to IEC 62321-5: 2013 and performed by ICP-AES.	2	n.d.	100
鉛 / Lead (Pb)	mg/kg		2	n.d.	1000
汞 / Mercury (Hg)	mg/kg	參考 IEC 62321-4: 2013 方法, 以感應耦合電漿原子發射光譜儀檢測. / With reference to IEC 62321-4: 2013 and performed by ICP-AES.	2	n.d.	1000
六價鉻 / Hexavalent Chromium Cr(VI)	mg/kg	參考 IEC 62321: 2008 方法, 以 UV-VIS 檢測. / With reference to IEC 62321: 2008 and performed by UV-VIS.	2	n.d.	1000
多溴聯苯總和 / Sum of PBBs	mg/kg	參考 IEC 62321: 2008 方法, 以氣相層析/質譜儀檢測. / With reference to IEC 62321: 2008 and performed by GC/MS.	-	n.d.	1000
一溴聯苯 / Monobromobiphenyl	mg/kg		5	n.d.	-
二溴聯苯 / Dibromobiphenyl	mg/kg		5	n.d.	-
三溴聯苯 / Tribromobiphenyl	mg/kg		5	n.d.	-
四溴聯苯 / Tetrabromobiphenyl	mg/kg		5	n.d.	-
五溴聯苯 / Pentabromobiphenyl	mg/kg		5	n.d.	-
六溴聯苯 / Hexabromobiphenyl	mg/kg		5	n.d.	-
七溴聯苯 / Heptabromobiphenyl	mg/kg		5	n.d.	-
八溴聯苯 / Octabromobiphenyl	mg/kg		5	n.d.	-
九溴聯苯 / Nonabromobiphenyl	mg/kg		5	n.d.	-
十溴聯苯 / Decabromobiphenyl	mg/kg	5	n.d.	-	

This document is issued by the Company subject to its General Conditions of Service printed overleaf, available on request or accessible at <http://www.sgs.com/en/Terms-and-Conditions.aspx> and, for electronic format documents, subject to Terms and Conditions for Electronic Documents at <http://www.sgs.com/en/Terms-and-Conditions/Termse-Document.aspx>. Attention is drawn to the limitation of liability, indemnification and jurisdiction issues defined therein. Any holder of this document is advised that information contained hereon reflects the Company's findings at the time of its intervention only and within the limits of client's instruction, if any. The Company's sole responsibility is to its Client and this document does not exonerate parties to a transaction from exercising all their rights and obligations under the transaction documents. This document cannot be reproduced, except in full, without prior written approval of the Company. Any unauthorized alteration, forgery or falsification of the content or appearance of this document is unlawful and offenders may be prosecuted to the fullest extent of the law. Unless otherwise stated the results shown in this test report refer only to the sample(s) tested.

# 測試報告

號碼(No.) : CE/2014/C6382

日期(Date) : 2015/01/07

頁數(Page): 3 of 6

# Test Report

南亞塑膠工業股份有限公司

NAN YA PLASTICS CORPORATION

嘉義縣新港鄉中洋村中洋工業區2號 硬布一廠

NO. 2, CHUNGYANG INDUSTRIAL PARK, HSINKANG VILLAGE, CHIAYI COUNTY, TAIWAN



測試項目 (Test Items)	單位 (Unit)	測試方法 (Method)	方法偵測 極限值 (MDL)	結果 (Result) No.1	法規 限值 (Limit)
多溴聯苯醚總和 / Sum of PBDEs	mg/kg	參考 IEC 62321: 2008 方法, 以氣相層析/質譜儀檢測. / With reference to IEC 62321: 2008 and performed by GC/MS.	-	n.d.	1000
一溴聯苯醚 / Monobromodiphenyl ether	mg/kg		5	n.d.	-
二溴聯苯醚 / Dibromodiphenyl ether	mg/kg		5	n.d.	-
三溴聯苯醚 / Tribromodiphenyl ether	mg/kg		5	n.d.	-
四溴聯苯醚 / Tetrabromodiphenyl ether	mg/kg		5	n.d.	-
五溴聯苯醚 / Pentabromodiphenyl ether	mg/kg		5	n.d.	-
六溴聯苯醚 / Hexabromodiphenyl ether	mg/kg		5	n.d.	-
七溴聯苯醚 / Heptabromodiphenyl ether	mg/kg		5	n.d.	-
八溴聯苯醚 / Octabromodiphenyl ether	mg/kg		5	n.d.	-
九溴聯苯醚 / Nonabromodiphenyl ether	mg/kg		5	n.d.	-
十溴聯苯醚 / Decabromodiphenyl ether	mg/kg	5	n.d.	-	

### 備註(Note) :

1. mg/kg = ppm ; 0.1wt% = 1000ppm
2. n.d. = Not Detected (未檢出)
3. MDL = Method Detection Limit (方法偵測極限值)
4. "-" = Not Regulated (無規格值)

## 測試報告

號碼(No.) : CE/2014/C6382

日期(Date) : 2015/01/07

頁數(Page): 4 of 6

## Test Report

南亞塑膠工業股份有限公司

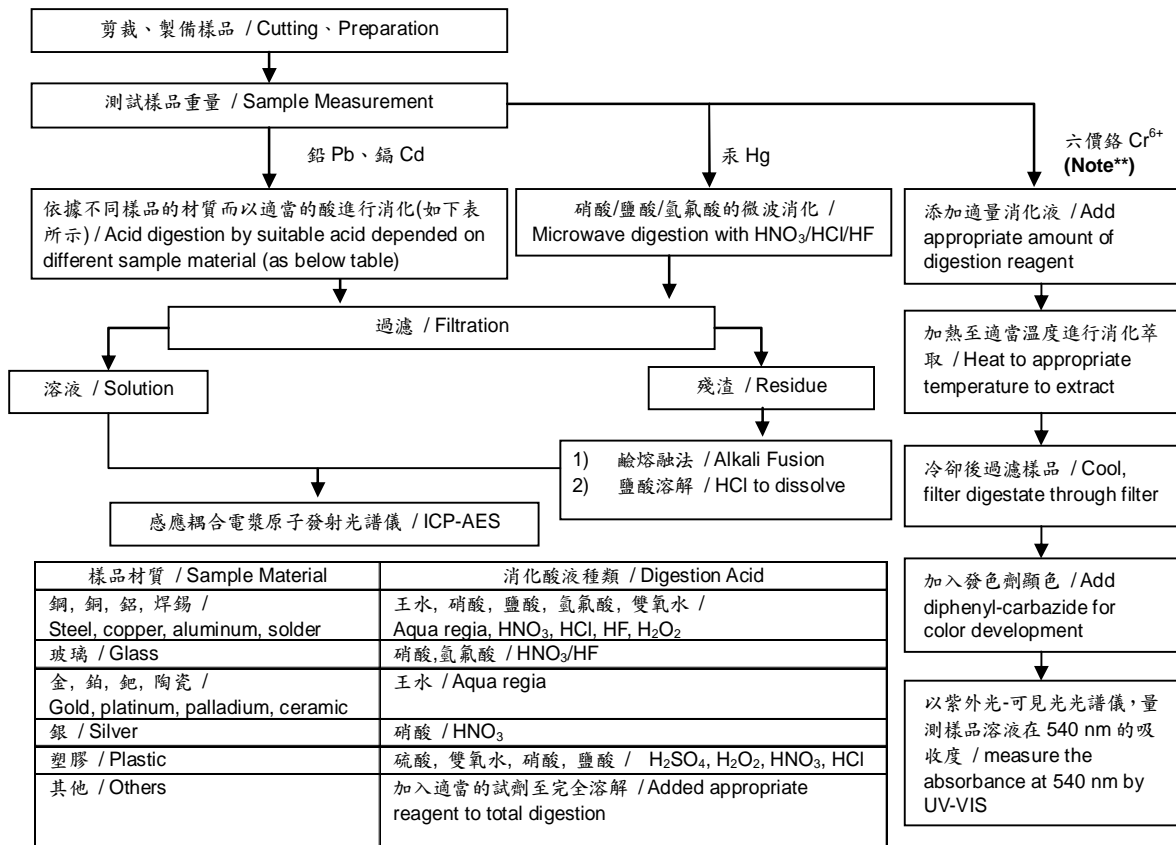
NAN YA PLASTICS CORPORATION

嘉義縣新港鄉中洋村中洋工業區2號 硬布一廠

NO. 2, CHUNGYANG INDUSTRIAL PARK, HSINKANG VILLAGE, CHIAYI COUNTY, TAIWAN



- 1) 根據以下的流程圖之條件，樣品已完全溶解。(六價鉻測試方法除外) / These samples were dissolved totally by pre-conditioning method according to below flow chart. (Cr<sup>6+</sup> test method excluded)
- 2) 測試人員：楊登偉 / Name of the person who made measurement: Climbgreat Yang
- 3) 測試負責人：張啓興 / Name of the person in charge of measurement: Troy Chang



**Note\*\*:** (1) 針對非金屬材料加入鹼性消化液，加熱至90~95°C萃取。 / For non-metallic material, add alkaline digestion reagent and heat to 90~95°C.  
 (2) 針對金屬材料加入純水，加熱至沸騰萃取。 / For metallic material, add pure water and heat to boiling.

## 測試報告

號碼(No.) : CE/2014/C6382

日期(Date) : 2015/01/07

頁數(Page): 5 of 6

## Test Report

南亞塑膠工業股份有限公司

NAN YA PLASTICS CORPORATION

嘉義縣新港鄉中洋村中洋工業區2號 硬布一廠

NO. 2, CHUNGYANG INDUSTRIAL PARK, HSINKANG VILLAGE, CHIAYI COUNTY, TAIWAN



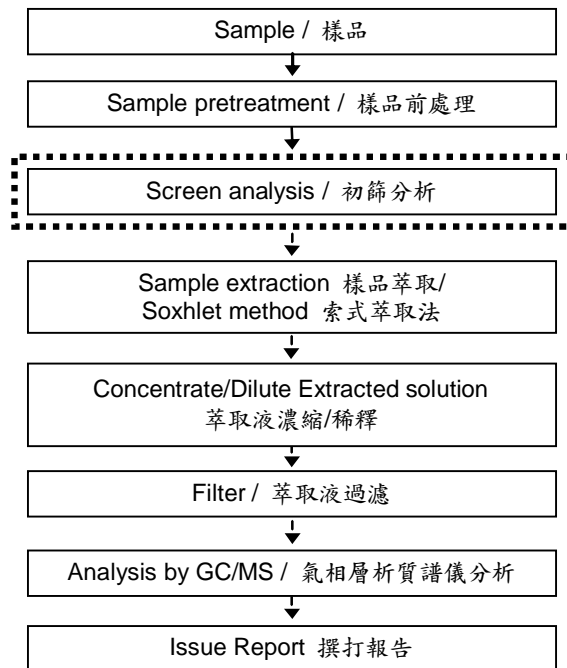
### 多溴聯苯/多溴聯苯醚分析流程圖 / PBB/PBDE analytical FLOW CHART

- 測試人員：翁賜彬 / Name of the person who made measurement: Roman Wong
- 測試負責人：張啓興 / Name of the person in charge of measurement: Troy Chang

初次測試程序 / First testing process —————>

選擇性篩檢程序 / Optional screen process .....>

確認程序 / Confirmation process - - ->



This document is issued by the Company subject to its General Conditions of Service printed overleaf, available on request or accessible at <http://www.sgs.com/en/Terms-and-Conditions.aspx> and, for electronic format documents, subject to Terms and Conditions for Electronic Documents at <http://www.sgs.com/en/Terms-and-Conditions/Termse-Document.aspx>. Attention is drawn to the limitation of liability, indemnification and jurisdiction issues defined therein. Any holder of this document is advised that information contained hereon reflects the Company's findings at the time of its intervention only and within the limits of client's instruction, if any. The Company's sole responsibility is to its Client and this document does not exonerate parties to a transaction from exercising all their rights and obligations under the transaction documents. This document cannot be reproduced, except in full, without prior written approval of the Company. Any unauthorized alteration, forgery or falsification of the content or appearance of this document is unlawful and offenders may be prosecuted to the fullest extent of the law. Unless otherwise stated the results shown in this test report refer only to the sample(s) tested.

## 測試報告

號碼(No.) : CE/2014/C6382

日期(Date) : 2015/01/07

頁數(Page): 6 of 6

## Test Report

南亞塑膠工業股份有限公司

NAN YA PLASTICS CORPORATION

嘉義縣新港鄉中洋村中洋工業區2號 硬布一廠

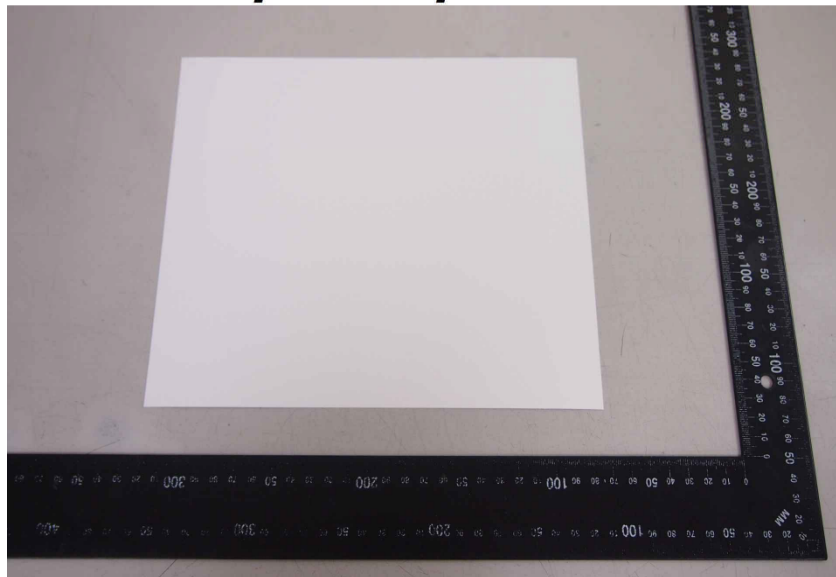
NO. 2, CHUNGYANG INDUSTRIAL PARK, HSINKANG VILLAGE, CHIAYI COUNTY, TAIWAN



\* 照片中如有箭頭標示，則表示為實際檢測之樣品/部位。\*

(The tested sample / part is marked by an arrow if it's shown on the photo.)

### CE/2014/C6382



\*\* 報告結尾 (End of Report) \*\*